



Farm Retirement AUCTION

TIMED ONLINE



Equipment located at 1950 125th Street, Geneva IA 50633

Opens: Wed, December 2nd / Closes: Wed, December 9, 2020 at 3PM



4WD TRACTOR

2006 John Deere 9220, shows 6,391 hrs., 4WD, powershift, 4 hyd., Lg. 1000 PTO, GreenStar AutoTrac ready, AgLeader Compass display, AgLeader GPS receiver, AgLeader GeoStar, WAAS, diff. lock, AM/FM, 520/85R42 tires, front & rear duals, S/N RW9200P040803

MFWD TRACTORS

2009 John Deere 8530, 4,924 hrs., MFWD, IVT, ILS, deluxe cab w/active seat, buddy seat, 5 hyd. w/case drain, 60 GPM hyd. pump, Lg. 1000 PTO, 3 pt. w/quick hitch convertible (cat. III/IV), AutoTrac ready, dual beam radar, AM/FM, front fenders, front weight bracket w/(16) weights, (1) pair 625kg rear inner weights, 480/80R50 rear duals, 380/80R38 front duals, S/N RW8530D047291

2004 John Deere 8420, 6,288 hrs., MFWD, powershift, deluxe cab w/active seat, buddy seat, 4 hyd. power beyond, w/case drain, Lg. 1000 PTO/540 adapter, 3 pt. w/quick hitch convertible (cat. II/III), GreenStar ready, wired for AgLeader autosteer w/OnTrac 2 steering wheel, AgLeader GPS 2500 receiver (S/N BB1130-1841319), radar, 42.5 GPM hyd. pump, AM/FM, front fenders, front weight bracket w/(20) weights, (1) pair 625kg rear inner weights, 480/80R50 rear duals, 420/85R34 fronts, S/N RW8420P027363

COMBINE

2010 John Deere 9770, 2,668 sep/3,482 eng. hrs, 2WD, STS, Contour-Master, single pt. hookups, 5 speed feeder house, HD lift cylinders, ProDrive, fine cut chopper, AHC, Dial-A-Speed, AgLeader Versa monitor (S/N 2012132968), GeoSteer auto steering w/ AgLeader GPS receiver, AM/FM, Maurer hopper extensions, 22.5' unload high unload rate auger, 520/85R42 straddle duals, 480/70R30 rear tires, S/N 1H097705CA0737844

GRAIN PLATFORM

2004 John Deere 630F, grain platform, 30', hyd. fore/aft, single pt. hookups, full fingered, stubble lights, poly tires, poly end dividers, low rock dam, S/N H00630F07352

CORN HEAD

2012 John Deere 612C, corn head, 12x30", single pt. hookups, stubble lights, hyd. adj. deck plates, poly snouts, opposed snapping rolls, poly floor liner, S/N 1H00612CACX746359

HEAD TRAILERS

Industrias America 430, head trailer, 30', tricycle type, single axle, ext. tongue, jack, ST235/85R16 tires, S/N 4302020806

Duo Lift DL-30, head trailer, 30', tricycle type, single axle, ext. tongue, jack, ST235/80R15 tires

SKID STEER & ATTACHMENTS

2007 John Deere 328, shows 2,319 hrs., skid steer, 2 speed, manual bucket latches, standard hyd. outlets, hand/foot controls, vinyl side windows & door, 14-17.5 tires, S/N T00328B139998

Hawz Rock & Brush Grapple, 84", (2) hyd. grapples, 3" tine spacing, standard hyd., skid steer mount

Tree & Post Puller, standard hyd., jaws open to 16" width, skid steer mount,

Hoover, material bucket, 78", weld on cutting edge, skid steer mount,

Tom Kat, pallet forks, 5"x42" adjustable, skid steer mount

Bus Equipment, receiver adapter, 2", skid steer mount

FORKLIFT

Mitsubishi FG25, 7,003 hrs., LP gas, w/tank, OROPS, auto, 3-stage mast, 86"/188" max. lift, 4"x42" adj. forks, side shift, load back rest, 5,000 lb. capacity, pneumatic tires, 7.00-12 front tires, 6.90/6.00-9 rear tires, S/N AF17B-05218

Manlift Platform, 24"x92", fork pockets, expanded metal floor, 1-1/2" pipe railings, 1-end hinged door, safety chain

PLANTERS

2005 John Deere 1770NT, CCS planter, 24x30", 2 pt., eSet units, bean discs, hyd. drive, pneumatic down pressure, AgLeader row shutoffs, Smart Boxes w/controller, markers, John Deere pin adj. row cleaners, 11-22.5 tires, S/N A01770E710238

2002 Kinze 3600, TwinLine planter, 16x30"/31x15", ground-driven, (31) bean units, (16) corn units, (31) Distel hopper ext., flat fold markers, 13-wave row unit, mounted coulters, adj. spring down pressure, unit lockups on splitter rows, KPM II monitor, staggered rubber faced closing wheels, 255/70R22.5 main tires, 750/20 wing tires, 4.80-8 trans. drive tires, SN 615791

SEED CART

2012 Travis, seed cart, electric Honda GX240 eng, 4-box seed tender, hyd. drive, hyd. fold, spout telescopes to 15', 12V talc applicator, 2-5/16" ball hitch, tandem axle, torsion suspension, electric brakes on both axles, rear hitch, ST235/80R16 tires, S/N HSC2012

Triggs, gravity wagon seed tender, 6"x16" hyd. driven auger, uses tractor hyd., 5" poly telescoping spout, manual winch raise, 2-compartment, roll tarp, brakes on rear axle, ext. tongue, Triggs HD running gear, 16.5L-16 tires



SPRAYER

Sprayer Specialties XLRD 1500, pull-type sprayer, 90' boom, 20" nozzle spacing, 1,500 gal. capacity, poly tank, 5-section shutoff, triple nozzle bodies, swath control, Bestway AutoGlide XR auto boom height controller, hyd. boom height adj., 5 gal. poly inductor, 60 gal. poly rinse, HO-FM02500 foamer system, controlled by AgLeader Versa display (not included), 380/90R45 tires, adj. tread width, S/N 0407404

NH3 APPLICATOR

DMI Nutri-Placer 4300, NH3 applicator, 15-knife x 30", pull-type, remove ext. for 13-knife, hyd. wing fold, spring loaded coulters, dual closing discs, spring loaded shanks, rear hitch, dual inlet hoses, Raven SuperCooler, Raven control valve & flow meter, dual pressure gauges, 12.5L-15 tires, 9.5L-15 wing tires

TILLAGE

2007 John Deere 2210, field cultivator, 44.5" wide, 6" spacing, 5-section, LL hitch, PermaLok sweeps, 200 lb. shanks, single pt. depth control, 3-bar coil tine harrow, rear hitch, 11L-15 tires on main & wings, walking tandems across, 9.5L-15 front gauge wheels, S/N N02210L006425

2007 John Deere 2210, field cultivator, 37.5", 6" spacing, LL hitch, PermaLok sweeps, 200 lb. shanks, single pt. depth control, 4-bar coil tine harrow, 9.5L-15 tires, walking tandems across, S/N N02210L006284

1996 John Deere 630, disc, 22", 9" spacing, spring loaded scrapers front & rear, 21" spherical blades, 3-bar coil tine harrow, single pt. depth control, 11L-15 tires, tandems across, S/N N00630X013577

2013 Blu-Jet Subtiller, 4 inline ripper, 5-shank, 30" spacing, 3 pt., spring-loaded coulters, automatic spring reset, new wear shins, (2) 20.5x8.0-10 adj. gauge wheels, S/N 017874

Unverferth 165, rolling harrow, 45', adj. tongue, double hyd. folding wings, single spike tooth harrow, 16" rolling baskets, 9.5L-15 tires, tandems on main, singles on wings, S/N A54370148

SEMI TRUCKS

2011 Volvo, shows 657,597 miles, day cab, Volvo D13, 10 speed, tandem axle, air ride suspension, air ride cab, moveable 5th wheel, air driver's seat, diff. lock, dual alum. fuel tanks, AM/FM/CD, 171" WB, 295/75R22.5 steer tires, 445/50R22.5 drive tires, all alum. wheels, VIN 4V4NC9EG7CN541940

2008 Volvo, shows 620,648 miles, day cab, ISX 450, Eaton Fuller, 10 speed, tandem axle, air ride suspension, air slide 5th wheel, air ride driver's seat, engine brake, diff. lock, rear pintle hitch, dual 100 gal. fuel tanks, 177" WB, 295/75R22.5 tires on (10) alum. wheels, VIN 4V4NC9TH79N267739

2004 Volvo, shows 503,583 miles, day cab, VED-12, Merritor, 10 speed, tandem axle, air ride suspension, air slide 5th wheel, air ride cab, air driver's seat, engine brake, diff. lock, AM/FM/cassette, dual alum. fuel tanks, 157" WB, 295/75R22.5 tires on (10) alum. wheels, VIN 4V4MC9GG05N376793

HOPPER BOTTOMS

2015 Timpte, grain hopper, 42"x96"x66", alum., tandem axle, (2) ag hoppers, EZ Flow hyd. trap openers, roller traps, air ride w/load gauge, Thunder 5000 electric tarp, front & rear ladders, SS rear panel, (4) 455/55R22.5 tires on alum. wheels

2005 Timpte, grain hopper, 42"x96"x66", alum., tandem axle, air ride suspension w/load gauge, (2) ag hoppers, Thunder 6000XP electric tarp, EZ Flow hyd. trap openers, roller traps, (2) tarp saver cords, front & rear ladders, SS front corners, 24.5LP tires, (8) alum. rims, VIN 1TDH422215B107393

2003 Timpte, grain hopper, 42"x96"x66", alum. tandem axle, (2) ag hoppers, air ride suspension w/load gauge, Shur-Co electric trap openers, roller traps, Thunder 6000XP electric tarp, front & rear ladders, SS front corners, (2) tarp saver cords, 24.5LP tires, (6) alum. & (2) steel wheels, VIN 1TDH422223B10322 (damaged landing gear)

GRAIN CART

2005 J&M 1050 Grain Storm, grain cart, single corner auger, Lg. 1000 PTO, hyd. adj. spout, Scale Tec GT460 Autolog scale indicator (S/N 7425), 900/60R32 tires, S/N 2048

AUGER & GRAIN VAC

Mayrath, auger, 13"x100", 540 PTO, mechanical swing hopper, hyd. cable winch raise, 9.5L-15 tires, S/N 910276

Westfield MK 130-61, auger, 13"x61", mechanical swing hopper, hyd. cable lift, 265/75R15 tires, S/N 93576

Westfield, jump auger, 8"x13", 48"x32" intake hopper, 220V electric motor, double V belt drive

Dunbar-Kapple Vac-U-Vator BX1051-5, grain vac, 5", 540 PTO, manual cable winch raise discharge, 6.00-15 tires, S/N 9473

PICKUP

2008 Chevrolet 2500 HD, 82,838 miles, 4WD, diesel, LT, Z71 pkg., crew cab, leather, 6.5' bed, AM/FM/XM/CD, power windows, power locks, cab steps, diamond tread alum. toolbox, roll up bed cover, 265/70R17 tires, VIN 1GCHK23658F151420 (prior salvage title)

TRAILERS

2018 PJ, flat bed, 23' tandem axle, tilt deck, 6' stationary deck in front, torsion suspension, brakes on both axles, 7,000 lb. axles, wooden deck, 81" between fenders, 2-5/16" ball hitch, RH fork pockets, 235/80R16 tires, VIN 4P5TJ2226K1295127

2012 PJ, dump trailer, 8'x14', tandem axle, spring suspension, 2-5/16" ball hitch, brakes on both axles, 7,000 lb. axles, self-contained hyd., fold down sides, (2) pull-out rear ramps, 235/80R16 tires, VIN _5D8142XD1181626

Flatbed Trailer, tandem axle, 40'x96", spring ride, (4) 1,500 gal. flat bottomed poly tanks, 2" valves & plumbing, 30 gal. poly inductor cone, (2) Honda GX160 motors w/ poly Banjo pumps, 10.00-20 tires, Dayton spoke wheels

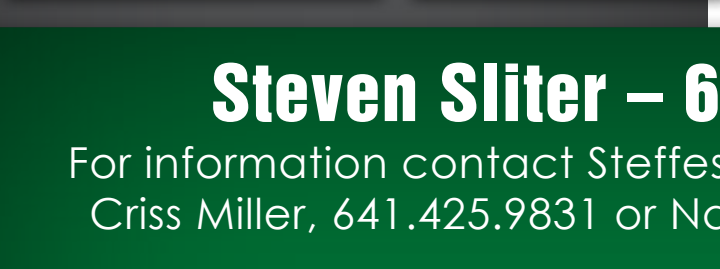
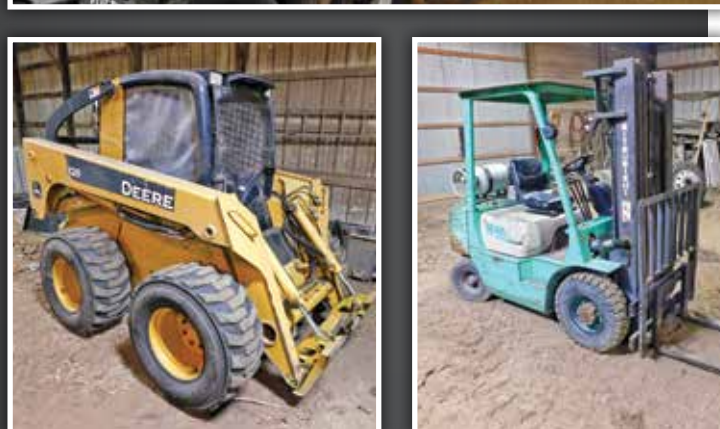
Tandem Axle Fuel Trailer, 500 gal. steel tank, 12V 20 GPM pump, auto nozzle, 30 gal. electric start 2 stage air compressor, air hose reel, torsion suspension, 11L/12.5L-15 tires



Auctioneer's Note: We are pleased to offer this clean line of equipment for Steven Sliter. Feel free to give Steven a call regarding his equipment or to schedule a time to preview. Loadout will be by appointment, please call Steven to schedule. Items need to be removed within 7 days of the auction.

TIRES

- (3) Implement Tires, (1) 9.5L-14 mounted on 6-hole wheel, (1) 11L-15 mounted on 6-hole wheel, and (1) 11L-15 not mounted
- (1) ST235/80R16 Tire mounted on 8-hole steel wheel
- (1) 295/75R22.5 Bridgestone Tire (capped) mounted on 10-hole hub pilot alum. wheel
- (1) 295/75R22.5 Bridgestone Tire (capped) mounted on 10-hole hub pilot alum. wheel
- (1) 295/75R22.5 Double Coin Tire (virgin) mounted on 10-hole hub pilot alum. wheel
- (1) 295/75R22.5 Double Coin Tire (virgin) mounted on 10-hole hub pilot alum. wheel
- (3) 295/75R22.5 Tires (1) Bridgestone virgin, (1) Goodyear cap, (1) Hercules cap
- (1) 295/75R22.5 Double Coin Tire (virgin) mounted on 10-hole hub pilot alum. wheel (may have bent rim)
- (1) 295/75R22.5 Double Coin Tire (virgin) mounted on 10-hole hub pilot alum. wheel
- (1) 295/75R22.5 Advanta Tire (virgin) mounted on 10-hole hub pilot alum. wheel
- (1) P265/70R16 mounted on 8-hole automotive wheel, and (1) P265/70R17 mounted on 6-hole automotive wheel



Steven Sliter – 641.425.6208
For information contact Steffes Group at 641.423.1947; Criss Miller, 641.425.9831 or Nate Larson, 319.931.3944

View more photos online at **SteffesGroup.com**



Steffes Group, Inc., 2245 East Bluegrass Road, Mt. Pleasant, IA 52641 | 319.385.2000

